



MONTHLY MEMBERSHIP PROGRESS REPORT

District 13 OH7

Results as of: 05/31/2018

GMT: CINDY GREGG

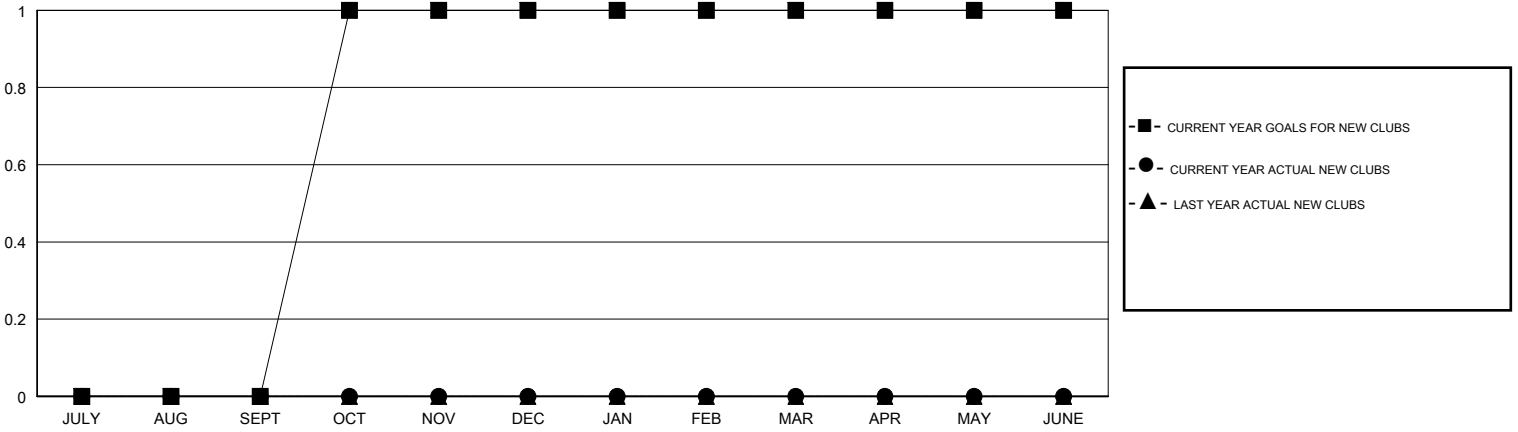
LOCATION OHIO

GMT CA

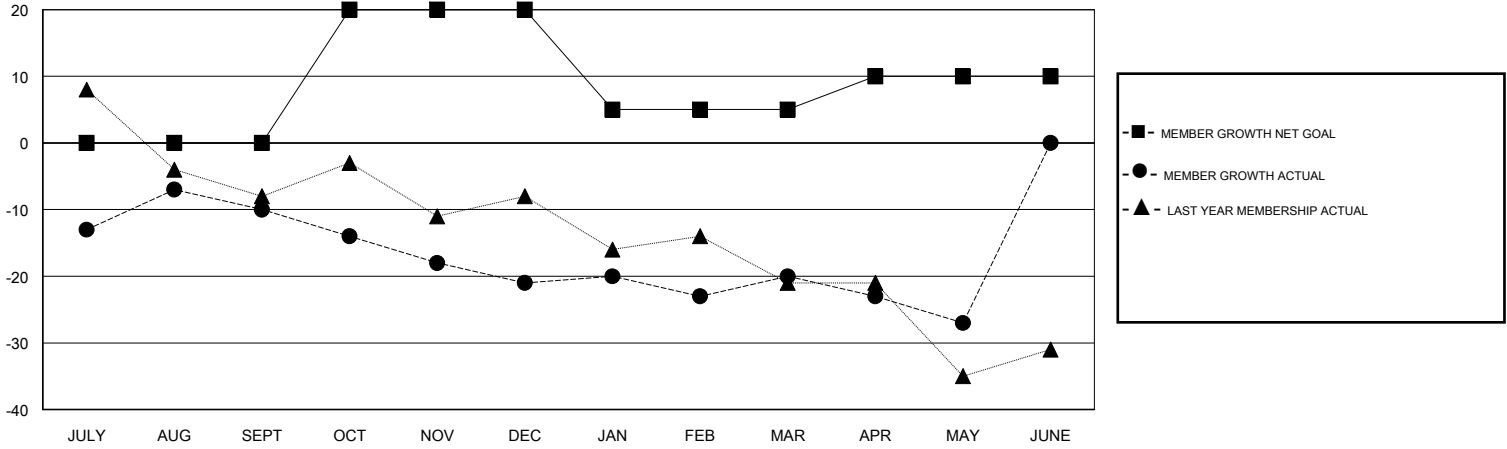
Clubs			
RESULTS FOR 2017-2018			
QUARTER	NEW CLUB GOAL	NEW CLUBS	DROPPED CLUBS
JULY/AUG/SEPT	0	0	0
OCT/NOV/DEC	1	0	0
JAN/FEB/MAR	0	0	0
APR/MAY/JUNE	0	0	0

Members			
RESULTS FOR 2017-2018			
QUARTER	MEMBER GROWTH NET GOAL	MEMBER GROWTH ACTUAL	DROPPED MEMBERS ACTUAL (including transfers)
JULY/AUG/SEPT	0	25	33
OCT/NOV/DEC	20	15	24
JAN/FEB/MAR	-15	24	22
APR/MAY/JUNE	5	15	20

GOALS AND ACTUAL NEW CLUBS CUMULATIVE



GOALS AND ACTUAL MEMBERS CUMULATIVE



DROPPED CLUBS: 0	32 CLUBS OF 55 ADDED 1 OR MORE NEW MEMBERS	<u>GENDER DISTRIBUTION</u> MALE 996 (67.62%) FEMALE 477 (32.38%) Women Percentage Fiscal Year Goal: 34%
<u>DROPPED MEMBERS</u> DECEASED 21 CLUB CANCELLED 0 OTHER 78 TOTAL 99	CLICK HERE FOR CUMULATIVE MEMBERSHIP DATA	TOTAL FAMILY UNIT MEMBERS 352 FAMILY MEMBERS PAYING HALF DUES 177